

# MOVE

## 1 Turning the earphones on and turning off

Press and hold the phone icon for 3 seconds. A beep sound will be heard once it is on or once you turn it off.



## 2 Preparing to pair the earphones

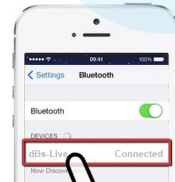
While powered off, press and hold the phone icon for 6 seconds. The Blue and Red LED should blink alternately indicating that it is ready to connect to a device.



## 3 Pairing to a Bluetooth enabled device

Turn on the Bluetooth function on your mobile device and turn on the Bluetooth headphone in pairing mode (refer to step 2). Hit search for Bluetooth devices on your mobile device and choose "dBs - Move" once the dBs Move Headphone is found. If your handset is asking for a passkey, enter 0000.

If you would like to connect the earphones to a USB Bluetooth adapter, for example for laptops, go to your laptop's Bluetooth settings and search for Bluetooth devices. Once "dBs - Move" has been found, choose and click connect or pair



## 4 Play / Pause

Press the phone icon to play audio and to pause.



## 5 Volume up and down and Previous / Next track

Press and hold the + button to turn the volume up or the - button to turn it down.  
Press the - button to go to the previous track or the + button to the next track.



## 6 Low Battery

The LED light will constantly flash indicating that it is low on battery.



## 7 Charging

Plug the mini usb port to the charging port on the earphones and the usb to a Laptop or PC. You can also use a usb charger that plugs into a wall socket if you have one. The Red LED is on to indicate that it is charging. Make sure that the earphone is fully charged for 6 hours before initial use. Once it has finished charging, the Led light will turn itself off.



## 8 Answering calls and Ending calls

Press the phone icon when answering calls in the middle of listening to music. To hang up, just press the phone icon again.



## 9 Rejecting calls

Press and hold the phone icon for 2 seconds to reject incoming calls.



## 10 Changing Language

Press and hold the phone icon and the + buttons together for 3 seconds to change the language.



Now you are ready for the dBs Experience!

If you need more help, simply email us at [info@directbeatsystems.com](mailto:info@directbeatsystems.com)